

Town & Country TRAVEL

FALL 2005

Taking Off

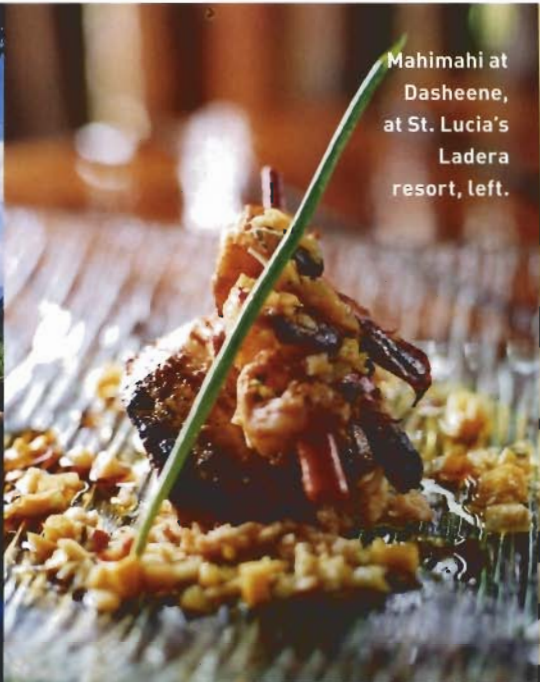
Brazil, Shanghai, Paris,
Vermont, England & Mexico



FALL 2005
U.S. \$4.95 CANADA \$5.95
FOREIGN \$5.95



The T&C Traveler



Mahimahi at Dasheene, at St. Lucia's Ladera resort, left.

St. Lucia's romantic Ladera resort has spectacular views of the island's Piton mountains and the Caribbean Sea, but **Dasheene**, its cliff-side restaurant, may be the biggest attraction. Visitors often leave their yachts and drop in for Jamaican chef Orlando Satchel's gourmet takes on traditional West Indian dishes. With tropical prints and natural fabrics, the open-air eatery feels both homey and elegant. Epicurean diners from Oprah Winfrey to John Malkovich have come for meals incorporating indigenous spices, fresh local produce (callaloo, plantains) and fish that's caught daily in nearby waters (mahimahi, red snapper, tuna). Follow the rich and tangy sweet-potato-and-coconut soup with Dasheene's signature panfried shrimp. The scenery disappears with the sun, so aim to come for lunch or an early dinner at sunset. Overnight guests can retire to one of the six villas and nineteen suites, all of which are built without a fourth wall, leaving an entire side open to the panoramic vistas. *Dinner approximately \$65. Double rooms from \$420. 758-459-7323; ladera.com.*

**YACHT
SPOT**

~SUZY BUCKLEY